



Product Range

Professional Refrigerated Products

THE HIGHEST STANDARD & THE HIGHEST LEVEL



INDEX

INTRODUCTION	04
FRONT OF HOUSE SERIES	
● Cake Display Showcase	08
● Jewellery Box Type Display Showcase	09
● Wine Display Tower	10
● FOH Counter Refrigerator	11
● Ice Cream Display Showcase Deluxe Beverage Cooler	12
● Sushi Display Upright Display Showcase Front Open Display	13
● Stairway Display Frost Top Cold Well Ice Well	14
● Color Stainless Steel	15
BACK OF HOUSE SERIES	
● Upright Cabinet	17
● Counter Cabinet	19
● Beverage Cooler	24
● Reach-in Blast Chiller / Freezer	27
● Roll-in Cabinet	30
● Thermowell	33
● Variable Temperature Drawer	35
● Solid Waste Refrigerator	37
● Roll-in Blast Chiller / Freezer	39



INTRODUCTION

Founded in 2017, Destar International Company Limited (Destar Refrigeration) is a relatively new and young company in terms of its establishment and history. However, the company is composed of several veterans and experts who have served and worked in the foodservice industry for over 30 years. The founders of the company have been in the manufacture of refrigeration products and in international business for over 30 years as well. Suffice to say, a plenty of talented, highly skilled and experienced people in the fields of manufacturing, international sales and marketing from several strategic markets have joined hands together in forming this company, which would for sure enhance the synergism of the company and guarantee the success of the company for years to come.



CORPORATE GOAL

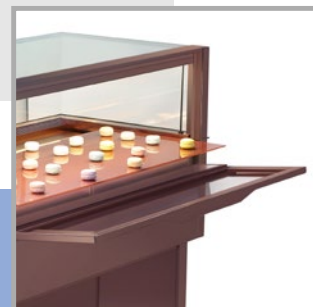
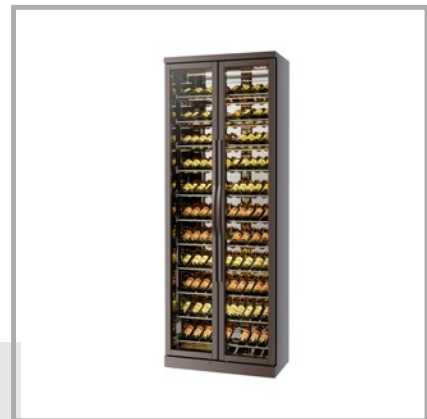
The corporate goal and objective of this company is to create and produce a full range of premium refrigeration products aiming at the high-end markets where people recognize and value quality products and services. The product coverage of the company starts from standard refrigeration products normally suitable and applicable in the back of the house (BOH) to any unique custom-made refrigeration products, such as wine cellars, cold display cases, refrigeration counters, etc., specially designed for the use in the front of the house (FOH).



FRONT OF HOUSE PRODUCT

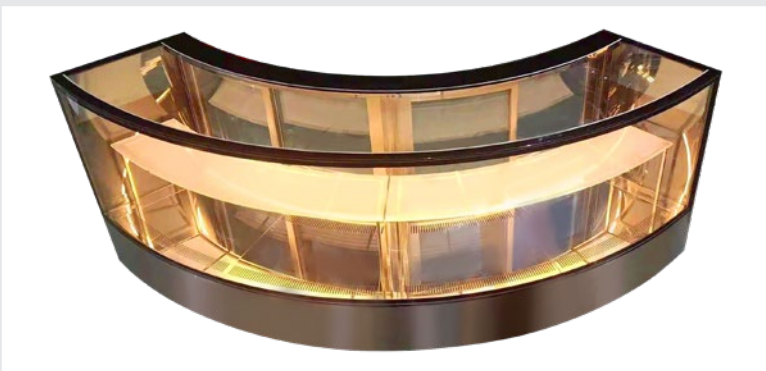
FRONT OF HOUSE PRODUCT

1. V-cut for all visible bending and louver
2. Double layer ultra-clear heated tempered glass for anti-condensation
3. Glass display showcase at the angle of 45°mitre intersection for front and top glass
4. 2700K LED internal light with diffuser
5. Invisible door handle
6. Digital display controller for easy operations
7. 304 grade stainless steel interior and exterior, optional colored and patterned stainless steel available
8. Stainless steel wine rack for wine tower
9. Adjustable glass shelves for cake display
10. Drain connection required for open display
11. Bespoke size and shape available to cater your specific need
12. Optional remote temperature controller available
13. ODP Zero high density Polyurethane insulation
14. CFC free refrigerant



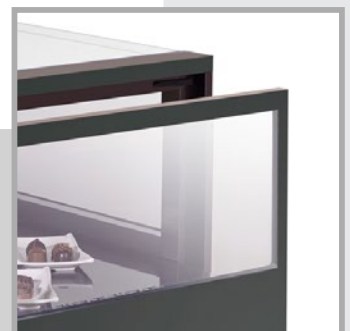
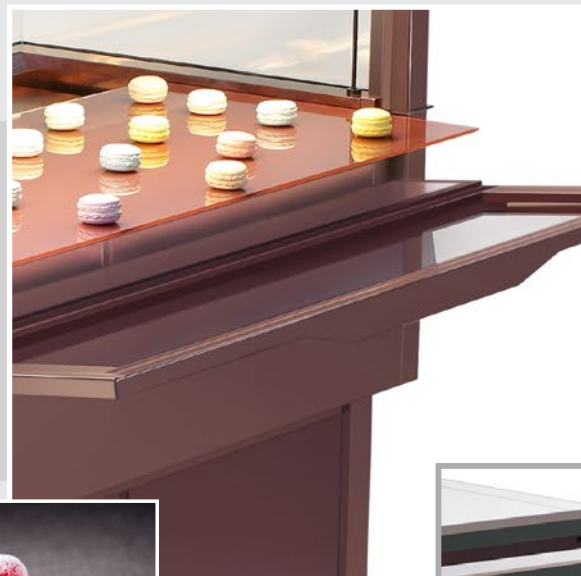
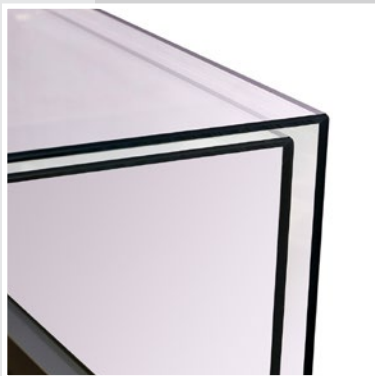


CAKE DISPLAY SHOWCASE



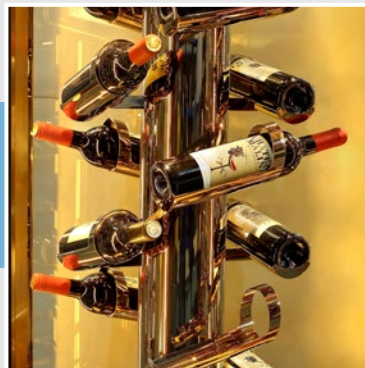


JEWELLERY BOX TYPE DISPLAY SHOWCASE



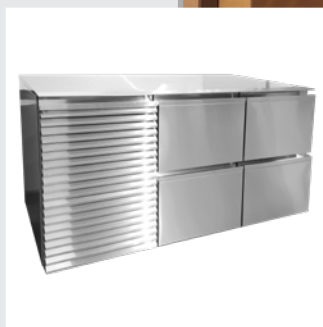


WINE DISPLAY TOWER

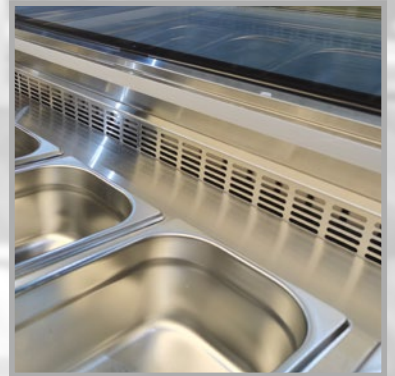
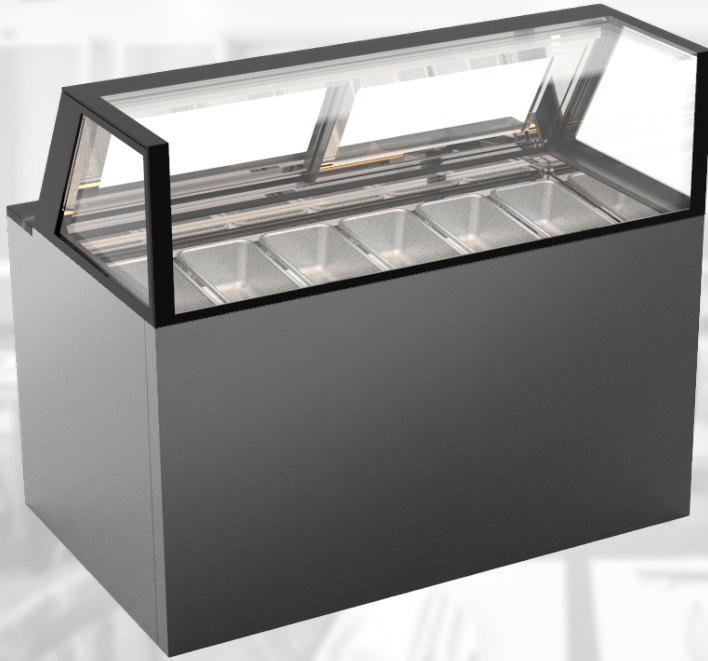




FOH COUNTER REFRIGERATOR



ICE CREAM DISPLAY SHOWCASE



DELUXE BEVERAGE COOLER



SUSHI DISPLAY



UPRIGHT DISPLAY SHOWCASE



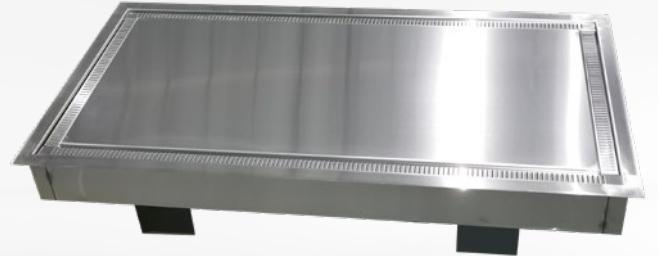
FRONT OPEN DISPLAY



STAIRWAY DISPLAY



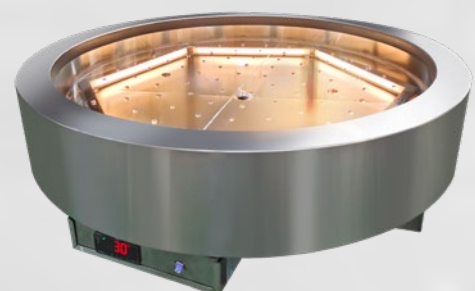
FROST TOP



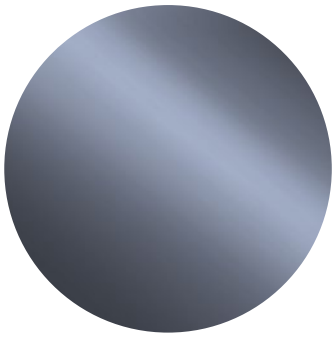
COLD WELL



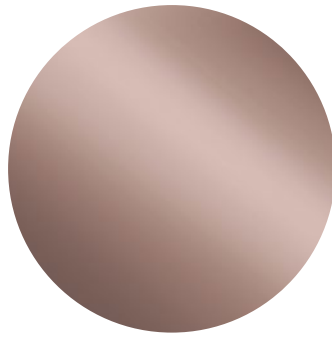
ICE WELL



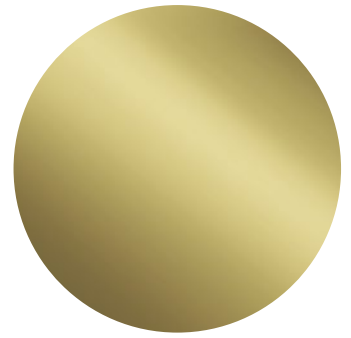
COLOR STAINLESS STEEL



2186
Black Copper Mirror



2210
Rose Gold Mirror



2180
Brass Mirror



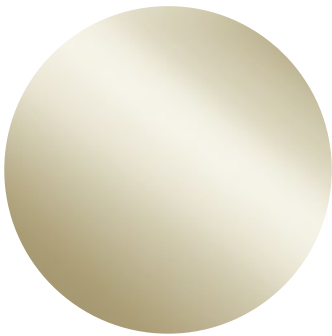
2187
Black Copper Hairline



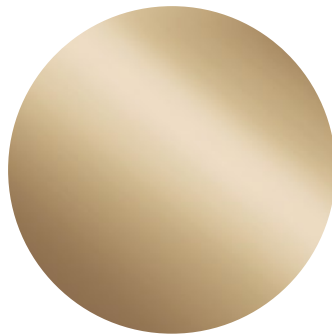
2211
Rose Gold Hairline



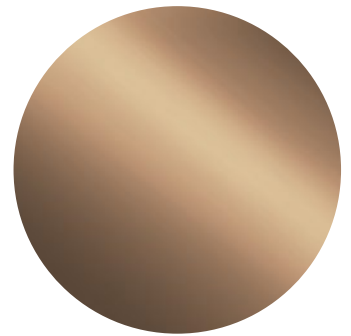
2181
Brass Hairline



2204
Champagne Gold Mirror



2222
Red Copper Gold Mirror



2192
Bronze Mirror



2205
Champagne Gold Hairline



2223
Red Copper Gold Hairline



2193
Bronze Hairline

* More colors and patterns available for choice.

A close-up, high-angle shot of a white liquid, likely milk or cream, being poured from a white pitcher into a white bowl. The liquid is captured mid-pour, creating a smooth, vertical stream that falls into the bowl. Inside the bowl, a round, textured dumpling or piece of food is visible, partially submerged in the liquid. The background is softly blurred, showing more of the bowl and the pitcher. The overall scene is clean and minimalist, with a focus on the textures and colors of the food and liquid.

BACK OF HOUSE PRODUCT

UPRIGHT CABINET

COMPLY FOR GN 2/1

1. 304 grade stainless steel interior and exterior
2. Galvanized steel exterior back and base
3. Comply for GN 2/1 size
4. Top ventilation
5. Self-closing door, 90° door dwell
6. High / Low temperature control safety alarm
7. Integral door handle
8. Reversible door hinge
9. Low wattage mullion heater
10. Automatic fan cut out door switch for freezer
11. Barrel locked door
12. Balloon type door gasket
13. ODP Zero high density Polyurethane insulation
14. Automatic defrost function, no drainage required
15. Adjustable racking and anti-tilt slides
16. One piece stainless steel radiused corner base for easy cleaning
17. Adjustable bullet feet for leveling
18. System operates up to 43°C ambient
19. CFC free refrigerant
20. Available in mid-temperature range +2/-2°C
21. Optional heavy duty swivel castor with brake
22. Optional full door "FD"
23. Optional heated glass door "GD" with LED light



UPRIGHT CABINET

COMPLY FOR GN 2/1



600-1



600-FD



1150-2



1150-FD

Chiller

Freezer

Chiller

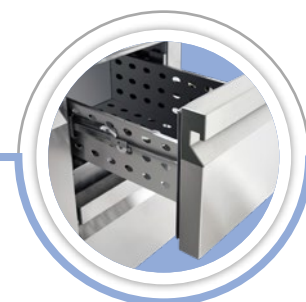
Freezer

Model	DUC-600-1	DUF-600-1	DUC-1150-2	DUF-1150-2
Specifications	2 half doors		4 half doors	
External Dimension (W x D x H mm)	705 x 825 x 1980		1400 x 825 x 1980	
Internal Dimension (W x D x H mm)	585 x 715 x 1325		1280 x 715 x 1325	
Door Opening Depth (mm)	1500			
PE Coated Shelf	4		8	
Tray Slides (pair)	4		8	
Temperature Range (°C)	+1 / +4	-18 / -22	+1 / +4	-18 / -22
Capacity (cu.m / litres)	0.6 / 600		1.15 / 1150	
Compressor (HP)	1/3	3/4	1/2	1
Power Supply	220V / 50Hz / 1PH			
Power Input - Running (amp)	2.5A	4.2A	4.6A	4.5A
Rating Power (watt)	730	880	770	990
Heat Rejection (watt)	480	1840	620	3380
Refrigerant	134a	404a	134a	404a

COUNTER CABINET

COMPLY FOR GN 1/1, 2/1 AND EN 400 X 600MM BAKING TRAY

1. 304 grade stainless steel interior and exterior
2. Galvanized steel exterior back and base
3. Comply for GN 1/1 size, GN 2/1 size and EN 400 x 600mm bakery tray
4. Cassette type removable condensing unit ←
5. Front ventilation
6. Self-closing door, 90° door dwell
7. High / Low temperature control safety alarm
8. Integral door handle
9. Reversible door hinge
10. Low wattage mullion heater
11. Barrel locked door
12. Balloon type door gasket
13. ODP Zero high density Polyurethane insulation
14. Automatic defrost function, no drainage required
15. Adjustable racking and anti-tilt slides
16. One piece stainless steel radiused corner base for easy cleaning
17. Adjustable bullet feet for leveling
18. Fully extendable heavy duty drawer sliding system ←
19. System operates up to 43°C ambient
20. CFC free refrigerant
21. Available in mid-temperature range +2/-2°C
22. Optional heavy duty swivel castor with brake
23. Optional 2 drawers bank set 'E' and 3 drawers bank set 'S'
24. Optional heated glass door "GD" with LED light



COUNTER CABINET

COMPLY FOR GN 1/1



120-D



270-DD



120-E



120-S



270-EE



270-SS

Chiller

Freezer

Chiller

Freezer

Model	DCC-120-D	DCF-120-D	DCC-270-DD	DCF-270-DD
Specifications	1 door		2 doors	
External Dimension (W x D x H mm)	860 x 680 x 850		1320 x 680 x 850	
Internal Dimension (W x D x H mm)	365 x 560 x 590		800 x 560 x 590	
Door Opening Depth (mm)	1130			
PE Coated Shelf	2		4	
Tray Slides (pair)	2		4	
Temperature Range (°C)	+1 / +4	-18 / -22	+1 / +4	-18 / -22
Capacity (cu.m / litres)	0.12 / 120		0.27 / 270	
Compressor (HP)	1/3	3/4	1/4	3/4
Power Supply	220V / 50Hz / 1PH			
Power Input - Running (amp)	2.5A	4.2A	2.5A	4.2A
Rating Power (watt)	660	880	660	880
Heat Rejection (watt)	480	1310	480	1310
Refrigerant	134a	404a	134a	404a

COUNTER CABINET

COMPLY FOR GN 1/1



410-DDD



560-DDDD



410-EEE



410-SSS



560-EEEE



560-SSSS

	Chiller		Freezer	
Model	DCC-410-DDD	DCF-410-DDD	DCC-560-DDDD	DCF-560-DDDD
Specifications	3 doors		4 doors	
External Dimension (W x D x H mm)	1780 x 680 x 850		2240 x 680 x 850	
Internal Dimension (W x D x H mm)	1250 x 560 x 590		1710 x 560 x 590	
Door Opening Depth (mm)	1130			
PE Coated Shelf	6		8	
Tray Slides (pair)	6		8	
Temperature Range (°C)	+1 / +4	-18 / -22	+1 / +4	-18 / -22
Capacity (cu.m / litres)	0.41 / 410		0.56 / 560	
Compressor (HP)	1/3	3/4	1/2	3/4
Power Supply	220V / 50Hz / 1PH			
Power Input - Running (amp)	2.5A	4.2A	4.6A	4.2A
Rating Power (watt)	660	880	770	880
Heat Rejection (watt)	480	1310	620	1840
Refrigerant	134a	404a	134a	404a

COUNTER CABINET

COMPLY FOR GN 2/1



190-D



400-DD



630-DDD



190-E



190-S



400-EE



400-SS



630-EEE



630-SSS

Chiller Freezer Chiller Freezer Chiller Freezer

Model	DCC-190-D	DCF-190-D	DCC-400-DD	DCF-400-DD	DCC-630-DDD	DCF-630-DDD
Specifications	1 door		2 doors		3 doors	
External Dimension (W x D x H mm)	1065 x 780 x 850		1730 x 780 x 850		2395 x 780 x 850	
Internal Dimension (W x D x H mm)	570 x 660 x 590		1210 x 660 x 590		1865 x 660 x 590	
Door Opening Depth (mm)	1410					
PE Coated Shelf	2		4		6	
Tray Slides (pair)	2		4		6	
Temperature Range (°C)	+1 / +4	-18 / -22	+1 / +4	-18 / -22	+1 / +4	-18 / -22
Capacity (cu.m / litres)	0.19 / 190	0.19 / 190	0.40 / 400	0.40 / 400	0.63 / 630	0.63 / 630
Compressor (HP)	1/3	3/4	1/3	3/4	1/2	3/4
Power Supply	220V / 50Hz / 1PH					
Power Input - Running (amp)	2.5A	4.2A	2.5A	4.2A	4.6A	4.2A
Rating Power (watt)	660	880	660	880	770	880
Heat Rejection (watt)	480	1310	480	1310	620	1840
Refrigerant	134a	404a	134a	404a	134a	404a

COUNTER CABINET

COMPLY FOR EN 400 X 600 MM BAKERY TRAY



160-D



350-DD



550-DDD

Model	DCB-160-D	DCB-350-DD	DCB-550-DDD
Specifications	1 door	2 doors	3 doors
External Dimension (W x D x H mm)	935 x 750 x 850	1470 x 750 x 850	2005 x 750 x 850
Internal Dimension (W x D x H mm)	440 x 650 x 590	950 x 650 x 590	1475 x 650 x 590
Door Opening Depth (mm)	1260		
PE Coated Shelf	2	4	6
Tray Slides (pair)	2	4	6
Temperature Range (°C)	+1 / +4		
Capacity (cu.m / litres)	0.16 / 160	0.35 / 350	0.55 / 550
Compressor (HP)	1/3	1/3	1/2
Power Supply	220V / 50Hz / 1PH		
Power Input - Running (amp)	2.5A	2.5A	4.6A
Rating Power (watt)	660	660	770
Heat Rejection (watt)	480	480	620
Refrigerant	134a		

BEVERAGE COOLER

1. 304 grade stainless steel interior and exterior
2. Galvanized steel exterior back and base
3. Double layer ultra-clear heated tempered glass for anti-condensation
4. LED internal light
5. Barrel locked door
6. Reversible door hinge
7. Balloon type door gasket
8. ODP Zero high density Polyurethane insulation
9. Automatic defrost function, no drainage required
10. Adjustable shelving
11. Adjustable leveling feet
12. System operates up to 32°C ambient
13. CFC free refrigerant
14. Optional solid door



BEVERAGE COOLER



DBC-1



DBC-2



DBC-3

Model	DBC-1	DBC-2	DBC-3
Specifications	1 glass door	2 glass doors	3 glass doors
External Dimension (W x D x H mm)	600 x 600 x 800	900 x 600 x 800	1350 x 600 x 800
Internal Dimension (W x D x H mm)	530 x 460 x 650	830 x 460 x 650	1280 x 460 x 650
Door Opening Depth (mm)	1152	1100	1100
Stainless Steel Perforated Shelves	2 levels		
Tray Slides (pair)	N/A		
Temperature Range (°C)	+4 / +8		
Capacity (cu.m / litres)	0.16 / 160	0.25 / 250	0.4 / 400
Compressor (HP)	1/6	1/6	1/3
Power Supply	220V / 50Hz / 1PH		
Power Input - Running (amp)	2.3A	2.3A	2.8A
Rating Power (watt)	440	440	660
Heat Rejection (watt)	280	280	480
Refrigerant	134a		

BEVERAGE COOLER



DBC-U1



DBC-U2

Model	DBC-U1	DBC-U2
Specifications	1 glass door	2 glass doors
External Dimension (W x D x H mm)	645 x 635 x 1800	1290 x 635 x 1800
Internal Dimension (W x D x H mm)	575 x 500 x 1580	1220 x 500 x 1580
Door Opening Depth (mm)	1280	
Stainless Steel Perforated Shelves	6 levels	
Tray Slides (pair)	N/A	
Temperature Range (°C)	+4 / +8	
Capacity (cu.m / litres)	0.44 / 440	0.95 / 950
Compressor (HP)	1/3	1/2
Power Supply	220V / 50Hz / 1PH	
Power Input - Running (amp)	2.8A	4.6A
Rating Power (watt)	660	770
Heat Rejection (watt)	480	620
Refrigerant	134a	

REACH-IN BLAST CHILLER / FREEZER

COMPLY FOR GN 1/1 OR EN 400 X 600 MM BAKERY TRAY

1. 304 grade stainless steel interior and exterior
2. Galvanized steel exterior back and base
3. Comply for GN 1/1 or EN 400 x 600 mm bakery tray
4. 15 mm height worktop for DRBCF3 and DRBCF4
5. Self-closing door, 90° door dwell
6. Low wattage mullion heater
7. ODP zero high density polyurethane insulation
8. Balloon type door gasket
9. Food probe
10. Automatic defrost function, no drainage required
11. Adjustable bullet feet
12. System operates up to 43°C ambient
13. CFC free refrigerant
14. Optional heavy duty swivel castor with brake
15. Optional touch screen controller panel



REACH-IN BLAST CHILLER / FREEZER

COMPLY FOR GN 1/1 OR EN 400 X 600 MM BAKERY TRAY



DRBCF-3



DRBCF-4



DRBCF-6

Model	DRBCF-3	DRBCF-4	DRBCF-6
Specifications	1 door, 15 H mm worktop		1 door
External Dimension (W x D x H mm)	800 x 850 x 850	800 x 850 x 1050	800 x 850 x 1330
Internal Dimension (W x D x H mm)	680 x 415 x 345	680 x 415 x 445	680 x 415 x 715
Door Opening Depth (mm)	1600		
PE Coated Shelf	N/A		
Tray Slides (pair)	3	4	6
Temperature Range (°C)	Blast chiller +90 to +3 in 90 mins, Blast freezer +90 to -18 in 240 mins		
Capacity (kgs)	7.5	10	20
Compressor (HP)	1/2	1/2	1 - 1/8
Power Supply	220V / 50Hz / 1PH		
Power Input - Running (amp)	3.8A	3.8A	5A
Rating Power (watt)	880	880	1150
Heat Rejection (watt)	1300	1300	2210
Refrigerant	404a		

REACH-IN BLAST CHILLER / FREEZER

COMPLY FOR GN 1/1 OR EN 400 X 600 MM BAKERY TRAY



DRBCF-10



DRBCF-12

Model	DRBCF-10	DRBCF-12
Specifications	1 door	1 door
External Dimension (W x D x H mm)	800 x 850 x 1790	800 x 850 x 2010
Internal Dimension (W x D x H mm)	680 x 415 x 1045	680 x 415 x 1240
Door Opening Depth (mm)	1600	
PE Coated Shelf	N/A	
Tray Slides (pair)	10	12
Temperature Range (°C)	Blast chiller + 90 to + 3 in 90 mins, Blast freezer + 90 to - 18 in 240 mins	
Capacity (kgs)	40	50
Compressor (HP)	1 - 3/4	2
Power Supply	220V / 50Hz / 1PH	380V / 50Hz / 3PH
Power Input - Running (amp)	10A	5.8A
Rating Power (watt)	2110	3810
Heat Rejection (watt)	3455	3815
Refrigerant	404a	

ROLL-IN CABINET COMPLY FOR GN 2/1 TROLLEY

1. 304 grade stainless steel interior, exterior and back
2. Galvanized steel exterior base
3. Top mounted refrigeration system
4. Comply for GN 2/1 size trolley (not included trolley)
5. Latch door lock
6. Modular construction for easy on-site installation
7. Cam-locked modular panels
8. 50 mm height polyurethane insulated floor
9. Internal protective bumper bar
10. Low wattage door mullion heater
11. ODP zero high density polyurethane insulation
12. Balloon type door gasket
13. Automatic defrost function, drainage not required
14. System operates up to 43°C ambient
15. CFC free refrigerant
16. Available in mid-temperature range +2/-2°C
17. Optional external ramp
18. Optional roll-through door
19. Optional heated glass door "GD" with LED light



ROLL-IN CABINET COMPLY FOR GN 2/1 TROLLEY



DRC-1030-1



DRC-2110-2

	Chiller	Freezer	Chiller	Freezer
Model	DRC-1030-1	DRF-1030-1	DRC-2110-2	DRF-2110-2
Specifications	1 door	1 door	2 doors	2 doors
External Dimension (W x D x H mm)	900 x 965 x 2375		1800 x 965 x 2375	
Internal Dimension (W x D x H mm)	710 x 825 x 1825		1610 x 825 x 1825	
Door Opening Depth (mm)	1179			
PE Coated Shelf	N/A			
Tray Slides (pair)	N/A			
Temperature Range (°C)	+1 / +4	-18 / -22	+1 / +4	-18 / -22
Capacity (cu.m / litres / trolley)	1.03 / 1030 / 1		2.11 / 2110 / 2	
Compressor (HP)	1/2	1 - 1/2	1	2
Power Supply	220V / 50Hz / 1PH			
Power Input - Running (amp)	4.6A	7.2A	7A	9A
Rating Power (watt)	770	1720	1540	1980
Heat Rejection (watt)	620	3282	1290	4460
Refrigerant	134a	404a	134a	404a

ROLL-IN CABINET

COMPLY FOR GN 2/1 TROLLEY



DRC-3630-3

	Chiller	Freezer
Model	DRC-3630-3	DRF-3630-3
Specifications	3 doors	3 doors
External Dimension (W x D x H mm)	2700 x 965 x 2375	
Internal Dimension (W x D x H mm)	2510 x 825 x 1825	
Door Opening Depth (mm)	1179	
PE Coated Shelf	N/A	
Tray Slides (pair)	N/A	
Temperature Range (°C)	+1 / +4	-18 / -22
Capacity (cu.m / litres / trolley)	3.36 / 3360 / 3	
Compressor (HP)	1 - 1/4	1 - 1/2 x 2
Power Supply	220V / 50Hz / 1PH	
Power Input - Running (amp)	10.5A	21A
Rating Power (watt)	2400	4400
Heat Rejection (watt)	1826	6678
Refrigerant	134a	404a

THERMOWELL COMPLY FOR GN 1/3

1. 304 grade stainless steel interior and exterior
2. Galvanized steel exterior base
3. Comply for GN 1/3 pan (exclude GN pan)
4. Stainless steel hinged lid
5. System operates up to 32°C ambient
6. Fitted with adjustable leveling feet
7. CFC free refrigerant
8. Optional counter / wall mounting bracket



THERMOWELL COMPLY FOR GN 1/3



DTW4



DTW7



DTW9

Model	DTW4	DTW7	DTW9
Specifications	comply for GN 1/3		
External Dimension (W x D x H mm)	1000 x 385 x 250	1530 x 385 x 250	1885 x 385 x 250
Internal Dimension (W x D x H mm)	680 x 310 x 110	1210 x 310 x 110	1560 x 310 x 110
Lid Opening Height (mm)	570		
PE Coated Shelf	N/A		
Tray Slides (pair)	N/A		
Temperature Range (°C)	+4 / +8		
Capacity (cu.m / litres)	1/3 GN x 4	1/3 GN x 7	1/3 GN x 9
Compressor (HP)	1/6		
Power Supply	220V / 50Hz / 1PH		
Power Input - Running (amp)	1.5		
Rating Power (watt)	270		
Heat Rejection (watt)	200		
Refrigerant	134a		

VARIABLE TEMPERATURE DRAWER

COMPLY FOR GN 2/1

1. 304 grade stainless steel interior and exterior
2. Galvanized steel exterior back and base
3. Comply for GN 2/1 size
4. Variable temperature range -22/+4°C
5. Electronic controller with easy one touch button to convert the operating temperature
6. Durable and heat resistant worktop
7. Front ventilation and side ventilation
8. Fully extended drawer slide
9. Integral drawer handle
10. Low wattage mullion heater for anti-condensation
11. Barrel locked drawer
12. Balloon type drawer gasket
13. ODP Zero high density Polyurethane insulation
14. Automatic defrost function, no drainage required
15. Fitted with adjustable levelling feet
16. System operates up to 32°C ambient
17. CFC free refrigerant



VARIABLE TEMPERATURE DRAWER

COMPLY FOR GN 2/1



DVD-1-150



DVD-1-200



DVD-2-150

Model	DVD-1-150	DVD-1-200	DVD-2-150
Specifications	1 drawer, GN 2/1, 150 H mm	1 drawer, GN 2/1, 200 H mm	2 drawers, GN 2/1, 150 H mm
External Dimension (W x D x H mm)	1100 x 680 x 450	1100 x 680 x 500	1100 x 680 x 850
Internal Dimension (W x D x H mm)	690 x 510 x 260	690 x 510 x 310	(690 x 510 x 260) x 2
Drawer Opening Depth (mm)		1280	
PE Coated Shelf		N/A	
Tray Slides (pair)		N/A	
Temperature Range (°C)		-22 / +4	
Capacity (cu.m / litres)	0.078 / 78	0.09 / 90	(0.078 / 78) x 2
Compressor (HP)	3/8	3/8	3/8 x 2
Power Supply	220V / 50Hz / 1PH		
Power Input - Running (amp)	4.2	4.2	4.2 x 2
Rating Power (watt)	980	980	980 x 2
Heat Rejection (watt)	825	825	825 x 2
Refrigerant	404a		

SOLID WASTE REFRIGERATOR ACCOMMODATE 240L LITTER BIN

1. 304 grade stainless steel interior and exterior
2. Galvanized steel exterior back and base
3. Comply for 240 liters litter bin
4. Front ventilation
5. Self-closing door, 90° door dwell
6. High / Low temperature control safety alarm
7. Integral door handle
8. Table top open with insulated hinged lid and balloon type gasket
9. Low wattage mullion heater
10. Balloon type door gasket
11. One piece stainless steel radiused corner base for easy cleaning
12. Static cooling system avoid unpleasant smell emission
13. ODP Zero high density Polyurethane insulation
14. Manual defrost, drainage required
15. Fitted with adjustable leveling feet
16. System operates up to 43°C ambient
17. CFC free refrigerant



SOLID WASTE REFRIGERATOR

ACCOMMODATE 240L LITTER BIN



DWR-1



DWR-2



DWR-3

Model	DWR-1	DWR-2	DWR-3
Specifications	1 door	2 doors	3 doors
External Dimension (W x D x H mm)	1140 x 925 x 1300	1910 x 925 x 1300	2680 x 925 x 1300
Internal Dimension (W x D x H mm)	N/A		
Drawer Opening Depth (mm)	1590		
PE Coated Shelf	N/A		
Tray Slides (pair)	N/A		
Temperature Range (°C)	+2 / +15		
Capacity (bin x litres)	1 x 240L	2 x 240L	3 x 240L
Compressor (HP)	1 / 2	1 / 2	3 / 4
Power Supply	220V / 50Hz / 1PH		
Power Input - Running (amp)	2.5	2.5	4.6
Rating Power (watt)	660	660	770
Heat Rejection (watt)	480	480	620
Refrigerant	134a		

ROLL-IN BLAST CHILLER / FREEZER

COMPLY FOR GN 2/1 OR COMBI TROLLEY

1. 304 grade stainless steel interior, exterior and back
2. Galvanized steel exterior base
3. Comply for GN 2/1 size trolley or combi trolley (not included trolley)
4. Latch door lock
5. Food probe
6. Modular construction for easy on-site installation
7. Cam-locked modular panels
8. Internal protective bumper bar
9. Low wattage door mullion heater
10. ODP zero high density polyurethane insulation
11. 100 mm height polyurethane insulated floor with heater wire
12. Balloon type door gasket
13. Equipped with evaporator section
14. With 22ømm drainage for defrost water
15. Touch screen controller panel
16. System operates up to 43°C ambient
17. Optional external ramp
18. Optional Roll-through door
19. Optional condensing unit



ROLL-IN BLAST CHILLER / FREEZER

ACCOMMODATE GN 2/1 OR COMBI TROLLEY



DMBCF-90



DMBCF-120



DMBCF-180

Model	DMBCF-90	DMBCF-120	DMBCF-180
Specifications	1 door	1 door	1 door
External Dimension (W x D x H mm)	1690 x 1270 x 2400	1690 x 1270 x 2400	1690 x 1270 x 2400
Internal Dimension (W x D x H mm)	680 x 415 x 345	680 x 415 x 445	680 x 415 x 715
Door Opening Depth (mm)	N/A		
PE Coated Shelf	N/A		
Tray Slides (pair)	N/A		
Temperature Range (°C)	Blast chiller +90 to +3 in 90 mins, Blast freezer +90 to -18 in 240 mins		
Capacity (trolley / kgs)	1 / 90	1 / 120	1 / 180
Compressor (HP)	N/A		
Power Supply	380V / 50HZ / 3PH		
Power Input - Running (amp)	N/A		
Rating Power (watt)	N/A		
Heat Rejection (watt)	N/A		
Refrigerant	404a		

ROLL-IN BLAST CHILLER / FREEZER

ACCOMMODATE GN 2/1 OR COMBI TROLLEY



DMBCF-240



DMBCF-320

Model	DMBCF-240	DMBCF-320
Specifications	1 door	1 door
External Dimension (W x D x H mm)	1690 x 2370 x 2400	1690 x 2370 x 2400
Internal Dimension (W x D x H mm)	680 x 415 x 1045	680 x 415 x 1240
Door Opening Depth (mm)	1600	
PE Coated Shelf	N/A	
Tray Slides (pair)	N/A	
Temperature Range (°C)	Blast chiller + 90 to + 3 in 90 mins, Blast freezer + 90 to - 18 in 240 mins	
Capacity (trolley / kgs)	2 / 240	2 / 320
Compressor (HP)	N/A	
Power Supply	380V / 50HZ / 3PH	
Power Input - Running (amp)	N/A	
Rating Power (watt)	N/A	
Heat Rejection (watt)	N/A	
Refrigerant	404a	



Destar International Company Limited

T: +852-3955 2182 F: +852-3619 0105

Destar (China) Refrigeration Equipment Company Limited

Lian Xing Industrial District, Xia Jie Village, Qi Shi Town, Dongguan City,
Guangdong Province, China

Postcode : 523510

T: +86-769-8177 6531 F: +86-769-8350 1293

E: info@destar-refrigeration.com

W: www.destar-refrigeration.com